

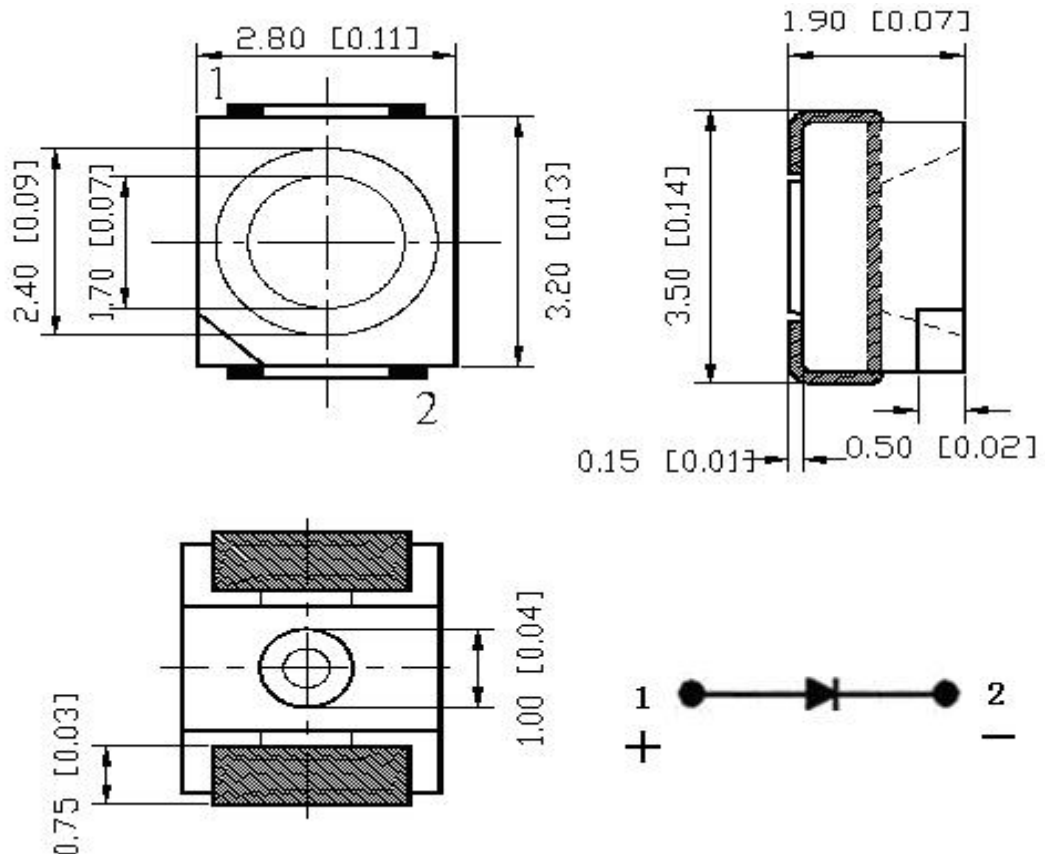
1、 Features:

- Emitting Color: Green
- Lens Type: Water Clear
- Device Outline: 3.5×2.8×1.9 (unit:mm)
- RoHS compliant

2、 Applications:

- Backlight for Mobile, Machine Vision, LCD Display
- Backlight in Dashboard and switch of Automotive

3、 Outline Dimensions:





4、 Absolute maximum ratings (Ta = 25°C):

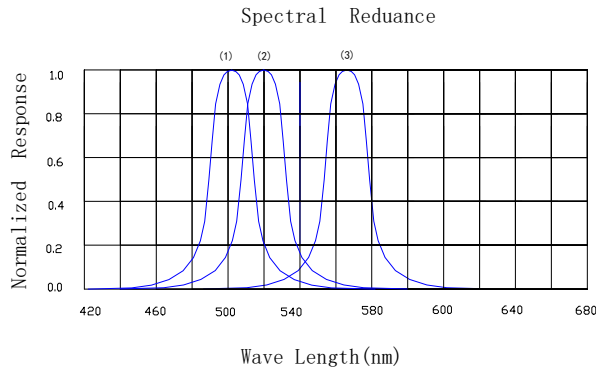
Parameter	Symbol	Test Condition	Value		Unit
			Min.	Max.	
Power Dissipation	Pd	---	---	90	mW
Reverse Voltage	VR	IR = 30 μ A	5	---	V
Pulse Current	IFp	Duty=0.1, 1kHz	---	100	mA
Forward Current	IFm	---	---	25	mA
Operating Temperature	Topr	---	-40	+85	°C
Storage Temperature	Tstr	---	-40	+85	°C

5、 Electrical and optical characteristics (Ta = 25°C):

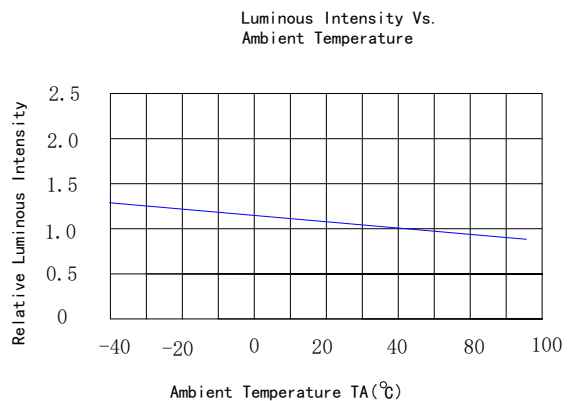
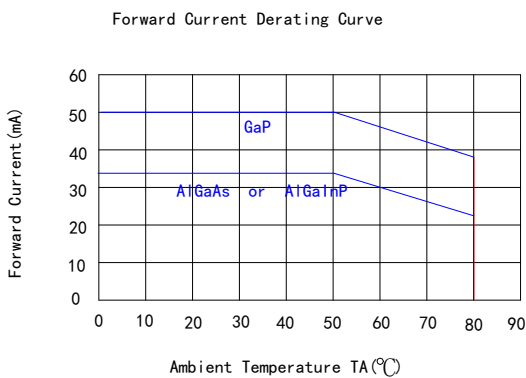
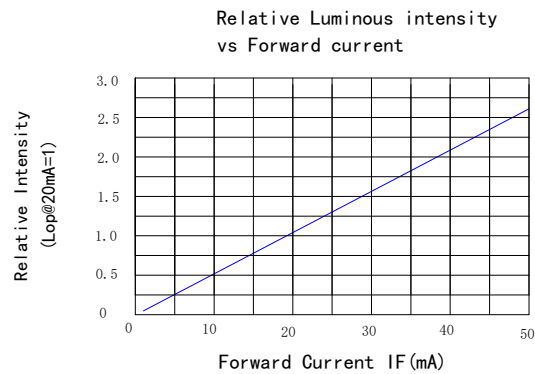
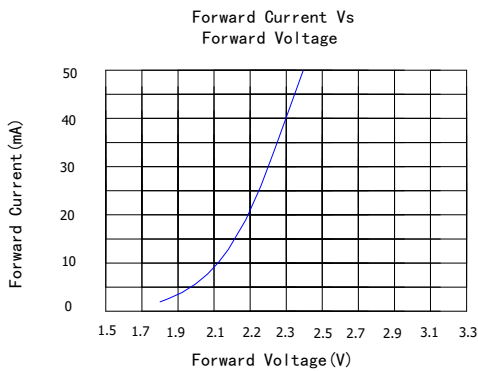
Parameter	Symbol	Test Condition	Value			Unit
			Min.	Typ.	Max.	
Forward Voltage	VF	IF = 20mA	---	3.2	3.5	V
Reverse Current	IR	VR = 5V	---	---	30	μ A
Wave Length	Tc	IF = 20mA	520	---	525	nm
Luminous Intensity	Iv	IF = 20mA	1000	1300	1500	mcd
Viewing Angle	2 θ 1/2	IF = 20mA	---	120	---	Deg.



Typical electrical/optical characteristic curves:



- (1) InGaN peak@505nm /bluish Green
- (2) InGaN peak@520nm /pure Green
- (3) GaP, GaAsP, AlGaAsP peak@568nm / Green



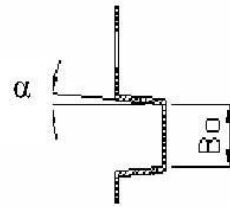
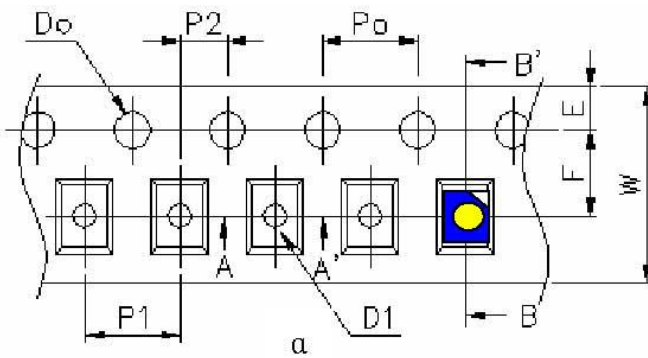


7.Specification of Packing

8.1 Taping and Orientation

Quantity: 2000 units/reel

Diameter: 178 mm



SEC: B-B'

