



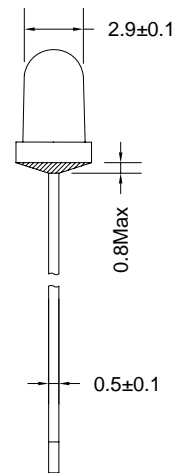
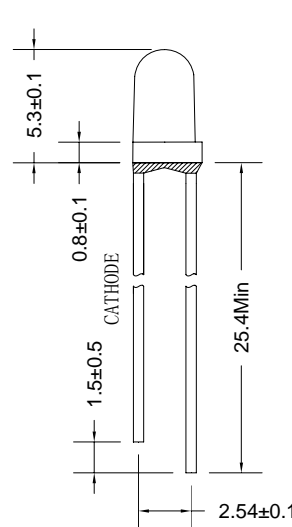
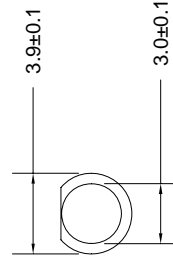
Part No: **JSL-303UWC**

Features:

- Single color
- High bright output
- Low power consumption
- High reliability and long life

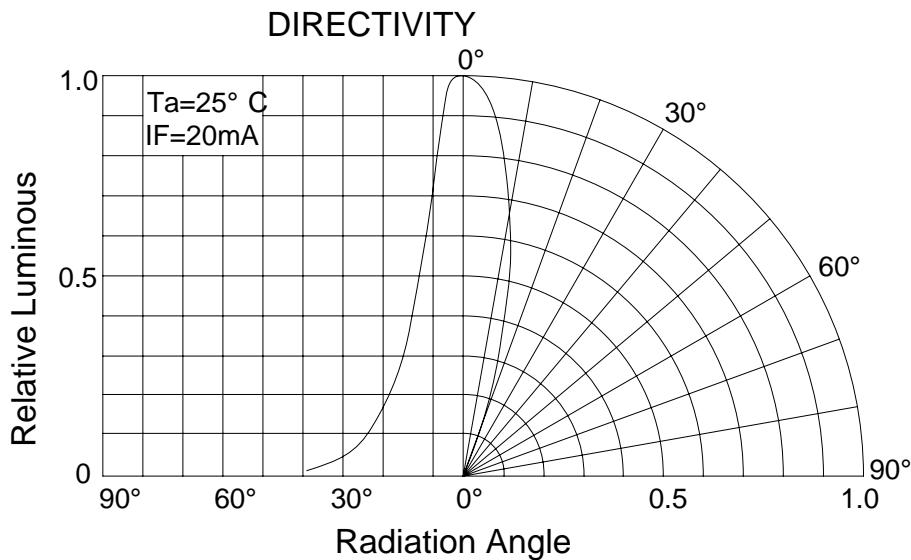
Descriptions:

- Dice material: InGaN
- Emitting Color: Super Bright White
- Device Outline: ϕ 3mm Round Type/ 3mm
- Lens Type: Water Clear



Directivity:

1. All dimensions are millimeters/单位: mm.
2. Tolerance is +/-0.25mm unless otherwise noted/





Absolute maximum ratings (Ta = 25°C)

Parameter	Symbol	Test Condition	Values		Unit
			Min.	Max.	
Reverse Voltage	V _R	I _R = 30 μ A	5	--	V
Forward Current	I _F	----	----	25	mA
Power Dissipation	P _d	----	----	90	mW
Pulse Current	I _{peak}	Duty=0.1mS, 1kHz	----	100	mA
Operating Temperature	T _{opr}	----	-40	+85	°C
Storage Temperature	T _{str}	----	-40	+100	°C

Electrical and optical characteristics (Ta = 25°C)

Parameter	Symbol	Test Condition	Values			Unit 单位
			Min.	Typ.	Max.	
Forward Voltage	V _F	I _F =20mA	----	3.2	3.6	V
Reverse Current	I _R	V _R =5V	----	----	30	μ A
Color Temperature	T _c	I _F = 20mA	—	6000	—	K
Luminous Intensity	I _v	I _F =20mA	----	8000	12000	mcd
Viewing Angle	2 θ 1/2	I _F =20mA	----	26	----	deg.



Typical electrical/optical characteristic curves:

