



**Part No.: JSL-321UYPGC-CA**

**Features:**

- Long life solid state reliability.
- Low power consumption
- I.C.compatible.
- Compliance with EU REACH.
- RoHs Compliant

**Descriptions:**

- Emitting Color: Yellow+Pure Green Bi-Color.
- Device Outline:  $\phi$  3mm Round Type.
- Lens Type: Water Clear.
- Three Leads With One Common Anode Type.
- The designed for a variety of applications where require dual illumination.

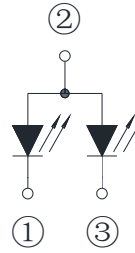
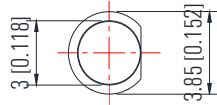
**Application:**

- Circuit board.
- Indicators.
- Computer.
- Home appliance.
- Industrial.



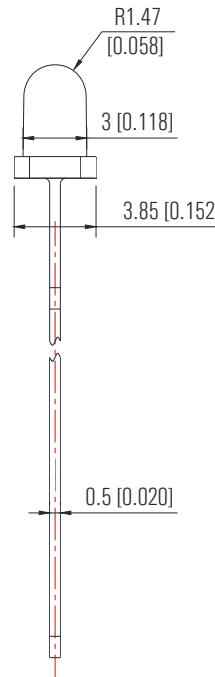
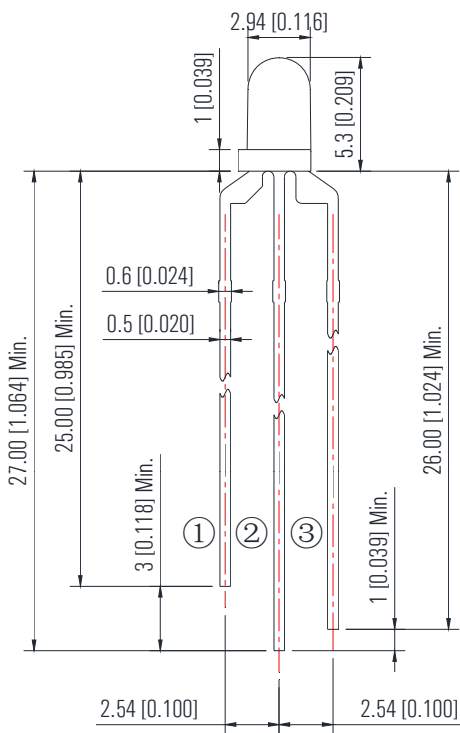
## Part No.: JSL-321UYPGC-CA

### Package Dimension:



1 Cathode the Second Color  
2 Common Anode  
3 Cathode the First Color

Polarity



### Notes:

1. All dimensions are millimeters/单位: mm.
2. Tolerance is +/-0.25mm unless otherwise noted/  
没有标注的公差均为±0.25mm



Part No.: **JSL-321UYPGC-CA**

**Absolute maximum ratings (Ta = 25°C)**

Parameter	Symbol	Test Condition	Values		Unit
			Min.	Max.	
Reverse Voltage	V <sub>R</sub>	I <sub>R</sub> = 30 μ A	----	5	V
Forward Current	I <sub>F</sub>	----	----	25	mA
Power Dissipation	P <sub>d</sub>	----	Yellow	60	mW
			Pure Green	85	
Pulse Current	I <sub>peak</sub>	Duty=0.1mS, 1kHz	----	100	mA
Operating Temperature	T <sub>opr</sub>	----	-40	+85	°C
Storage Temperature	T <sub>str</sub>	----	-40	+85	°C

**Electrical and optical characteristics (Ta = 25°C)**

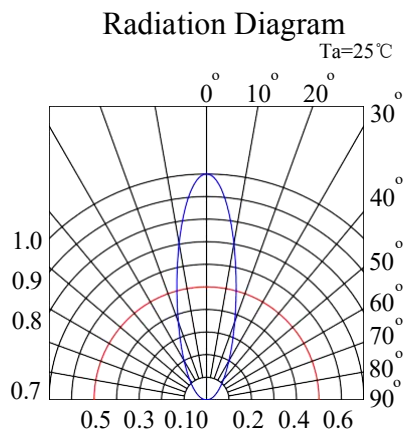
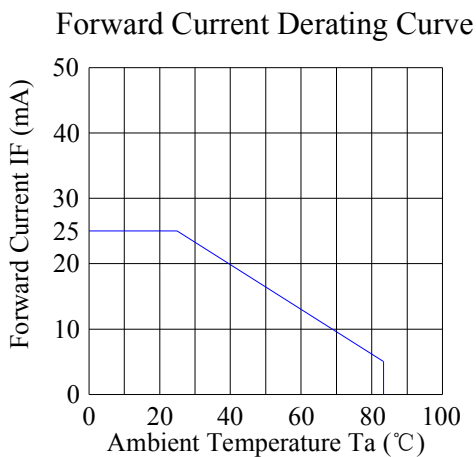
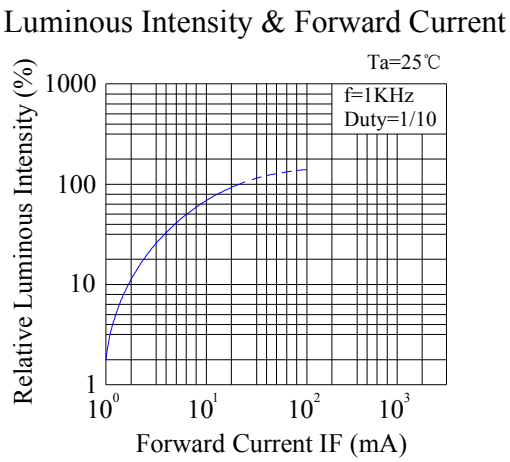
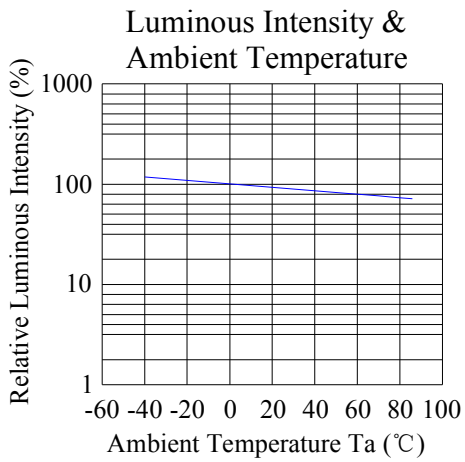
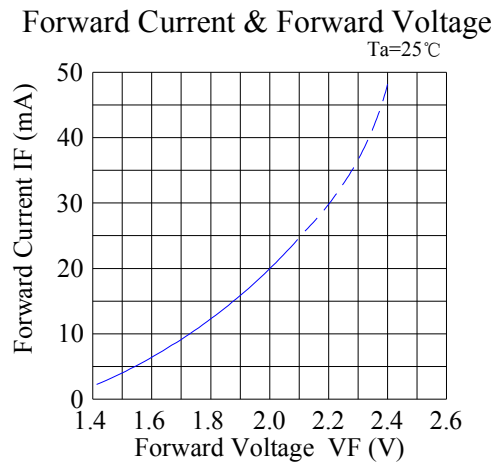
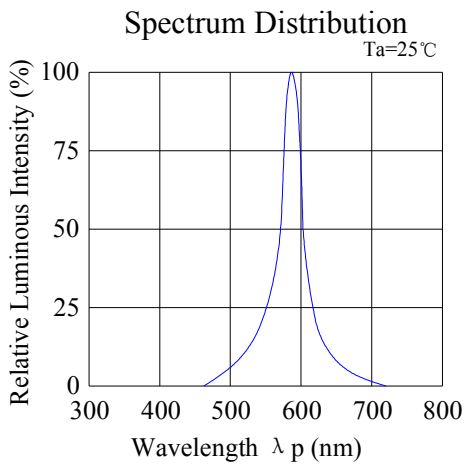
Parameter	Symbol	Test Condition	Color	Value			Unit
				Min.	Typ.	Max.	
Forward Voltage	V <sub>F</sub>	I <sub>F</sub> = 20mA	UY	1.8	2.0	2.4	V
			PG	2.6	3.0	3.3	
Reverse Current	I <sub>R</sub>	V <sub>R</sub> = 5V	UY	---	---	5	μ A
			PG	---	---	5	
Dominate Wavelength	λ <sub>d</sub>	I <sub>F</sub> = 20mA	UY	---	590	---	nm
			PG	---	525	---	
Peak Wavelength	λ <sub>p</sub>	I <sub>F</sub> = 20mA	UY	---	592	---	nm
			PG	---	520	---	
Spectral Line half-width	Δ λ	I <sub>F</sub> =20mA	UY	----	20	----	nm
			PG				
Luminous Intensity	I <sub>v</sub>	I <sub>F</sub> = 20mA	UY	600	1000	----	mcd
			PG	3000	4000	----	
Viewing Angle	2 θ 1/2	I <sub>F</sub> = 20mA	UY	---	30	---	deg
			PG				



Part No.: JSL-321UYPGC-CA

Typical electrical/optical characteristic curves:

(25°C Ambient Temperature Unless Otherwise Noted)



## Part No.: JSL-321UYPGC-CA

### Typical electrical/optical characteristic curves:

(25°C Ambient Temperature Unless Otherwise Noted)

