



**Part No.: JSL-321YGW-CA**

**Features:**

- Long life solid state reliability.
- Low power consumption
- I.C.compatible.
- Compliance with EU REACH.
- RoHs Compliant

**Descriptions:**

- Emitting Color: Yellow+Yellow Green Bi-Color.
- Device Outline:  $\phi$  3mm Round Type.
- Lens Type: White Diffused.
- Three Leads With One Common Anode Type.
- The designed for a variety of applications where require dual illumination.

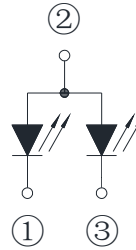
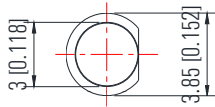
**Application:**

- Circuit board.
- Indicators.
- Computer.
- Home appliance.
- Industrial.



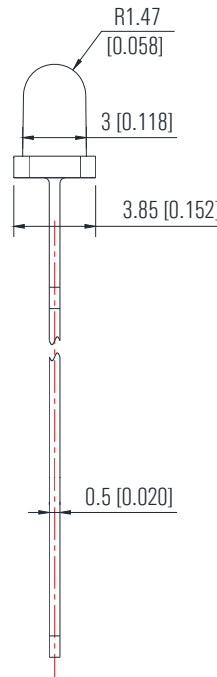
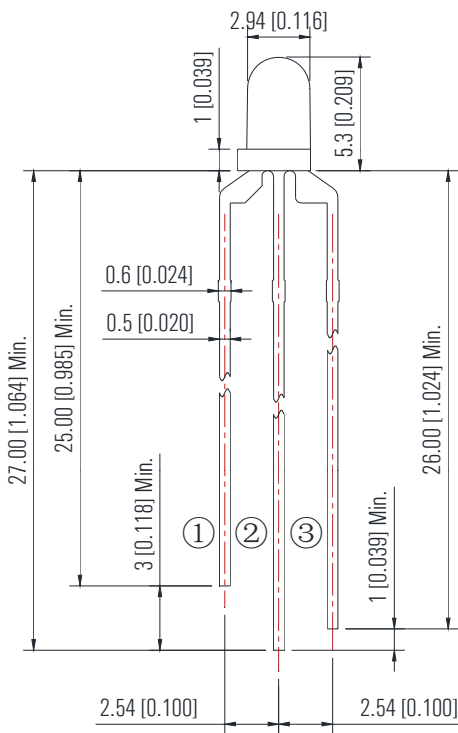
## Part No.: JSL-321YGW-CA

### Package Dimension:



- 1 Cathode the Second Color
- 2 Common Anode
- 3 Cathode the First Color

Polarity



#### Notes:

1. All dimensions are millimeters/单位: mm.
2. Tolerance is +/-0.25mm unless otherwise noted/  
没有标注的公差均为±0.25mm



Part No.: JSL-321YGW-CA

**Absolute maximum ratings (Ta = 25°C)**

Parameter	Symbol	Test Condition	Values		Unit
			Min.	Max.	
Reverse Voltage	V <sub>R</sub>	I <sub>R</sub> = 30 μ A	----	5	V
Forward Current	I <sub>F</sub>	----	----	25	mA
Power Dissipation	P <sub>d</sub>	----	Yellow	60	mW
			Yellow Green	60	
Pulse Current	I <sub>peak</sub>	Duty=0.1mS, 1kHz	----	100	mA
Operating Temperature	T <sub>opr</sub>	----	-40	+85	°C
Storage Temperature	T <sub>str</sub>	----	-40	+85	°C

**Electrical and optical characteristics (Ta = 25°C)**

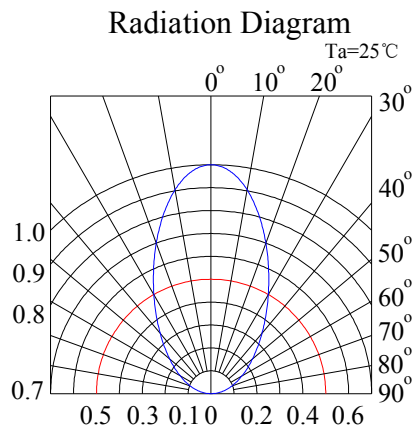
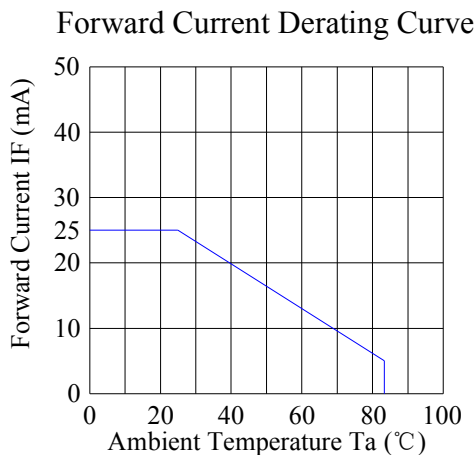
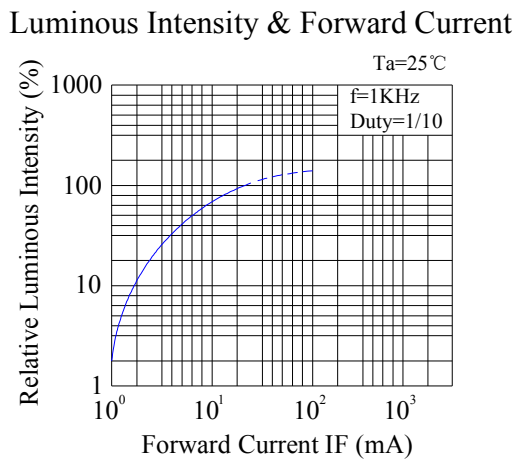
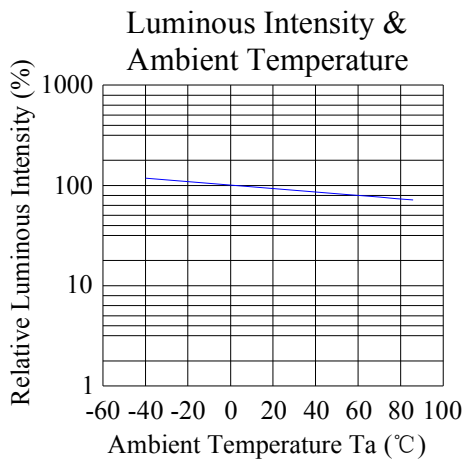
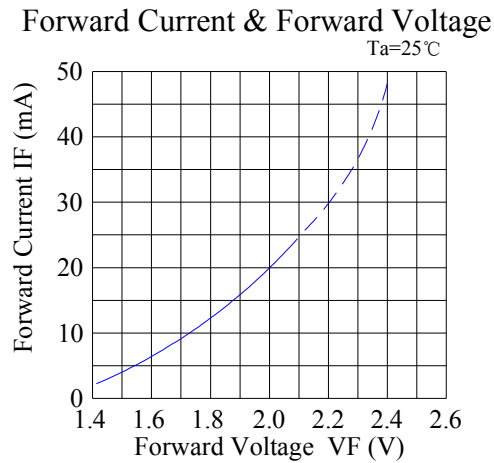
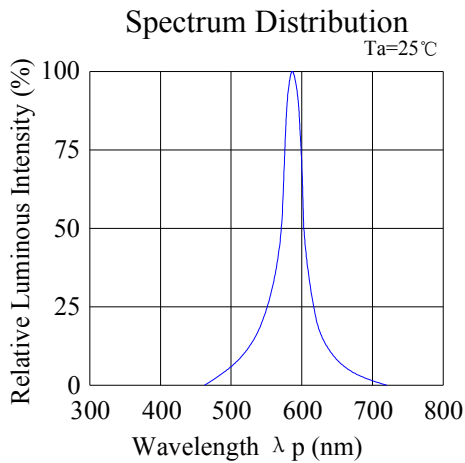
Parameter	Symbol	Test Condition	Color	Value			Unit
				Min.	Typ.	Max.	
Forward Voltage	V <sub>F</sub>	I <sub>F</sub> = 20mA	Y	1.8	2.0	2.3	V
			G	1.8	2.0	2.3	
Reverse Current	I <sub>R</sub>	V <sub>R</sub> = 5V	Y	---	---	5	μ A
			G	---	---	5	
Dominate Wavelength	λ <sub>d</sub>	I <sub>F</sub> = 20mA	Y	---	590	---	nm
			G	---	571	---	
Peak Wavelength	λ <sub>p</sub>	I <sub>F</sub> = 20mA	Y	---	592	---	nm
			G	---	573	---	
Spectral Line half-width	Δ λ	I <sub>F</sub> =20mA	Y	----	20	----	nm
			G				
Luminous Intensity	I <sub>v</sub>	I <sub>F</sub> = 20mA	Y	300	450	----	mcd
			G	50	100	----	
Viewing Angle	2 θ 1/2	I <sub>F</sub> = 20mA	Y	---	60	---	deg
			G				



Part No.: JSL-321YGW-CA

Typical electrical/optical characteristic curves:

(25°C Ambient Temperature Unless Otherwise Noted)





Part No.: JSL-321YGW-CA

Typical electrical/optical characteristic curves:

(25°C Ambient Temperature Unless Otherwise Noted)

