



Part No.: JSL-321UYPGW-CC

Features:

- Long life solid state reliability.
- Low power consumption
- I.C.compatible.
- Compliance with EU REACH.
- RoHs Compliant

Descriptions:

- Emitting Color: Yellow+Pure Green Bi-Color.
- Device Outline: ϕ 3mm Round Type.
- Lens Type: White Diffused.
- Three Leads With One Common Cathode Type.
- The designed for a variety of applications where require dual illumination.

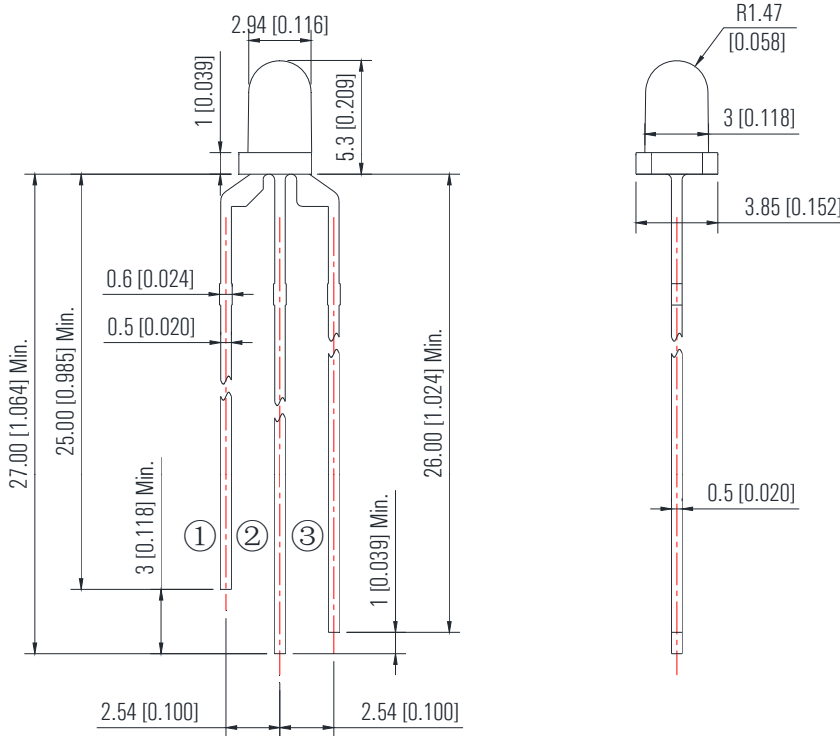
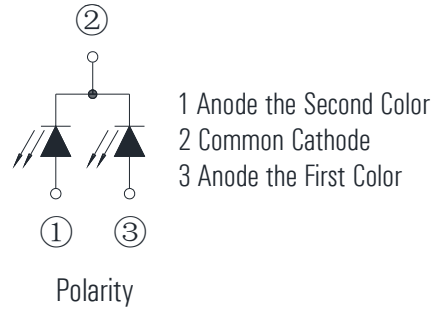
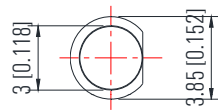
Application:

- Circuit board.
- Indicators.
- Computer.
- Home appliance.
- Industrial.



Part No.: JSL-321UYPGW-CC

Package Dimension:



Notes:

1. All dimensions are millimeters/单位: mm.
2. Tolerance is +/-0.25mm unless otherwise noted/
没有标注的公差均为±0.25mm



Part No.: JSL-321UYPGW-CC

Absolute maximum ratings (Ta = 25°C)

| Parameter | Symbol | Test Condition | Values | | Unit |
|-----------------------|-------------------|-------------------------|------------|------|------|
| | | | Min. | Max. | |
| Reverse Voltage | V _R | I _R = 30 μ A | ---- | 5 | V |
| Forward Current | I _F | ---- | ---- | 25 | mA |
| Power Dissipation | P _d | ---- | Yellow | 60 | mW |
| | | | Pure Green | 85 | |
| Pulse Current | I _{peak} | Duty=0.1mS, 1kHz | ---- | 100 | mA |
| Operating Temperature | T _{opr} | ---- | -40 | +85 | °C |
| Storage Temperature | T _{str} | ---- | -40 | +85 | °C |

Electrical and optical characteristics (Ta = 25°C)

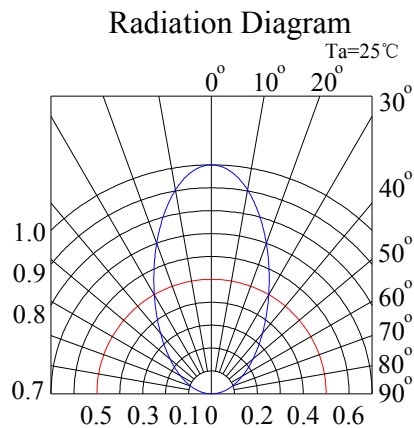
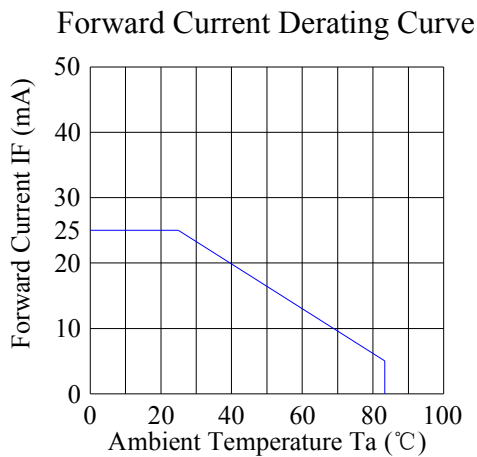
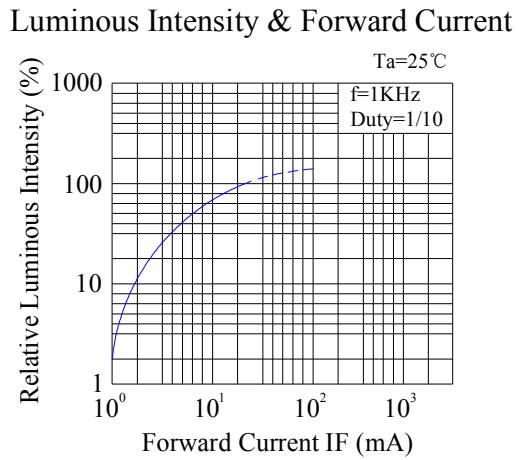
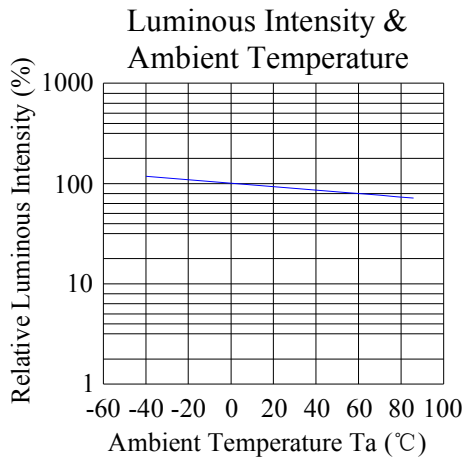
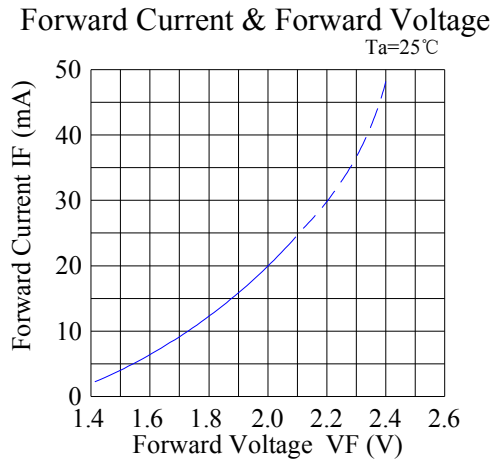
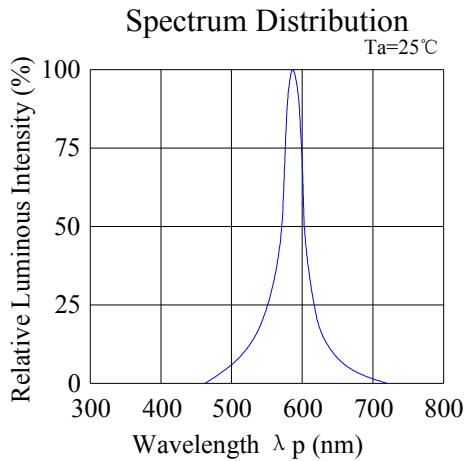
| Parameter | Symbol | Test Condition | Color | Value | | | Unit |
|--------------------------|----------------|-----------------------|-------|-------|------|------|------|
| | | | | Min. | Typ. | Max. | |
| Forward Voltage | V _F | I _F = 20mA | UY | 1.8 | 2.0 | 2.4 | V |
| | | | PG | 2.6 | 3.0 | 3.3 | |
| Reverse Current | I _R | V _R = 5V | UY | --- | --- | 5 | μ A |
| | | | PG | --- | --- | 5 | |
| Dominate Wavelength | λ _d | I _F = 20mA | UY | --- | 590 | --- | nm |
| | | | PY | --- | 525 | --- | |
| Peak Wavelength | λ _p | I _F = 20mA | UY | --- | 592 | --- | nm |
| | | | PG | --- | 520 | --- | |
| Spectral Line half-width | Δ λ | I _F =20mA | UY | ---- | 20 | ---- | nm |
| | | | PG | | | | |
| Luminous Intensity | I _v | I _F = 20mA | UY | 300 | 500 | ---- | mcd |
| | | | PG | 1500 | 2000 | ---- | |
| Viewing Angle | 2 θ 1/2 | I _F = 20mA | UY | --- | 60 | --- | deg |
| | | | PG | | | | |



Part No.: JSL-321UYPGW-CC

Typical electrical/optical characteristic curves:

(25°C Ambient Temperature Unless Otherwise Noted)





Part No.: JSL-321UYPGW-CC

Typical electrical/optical characteristic curves:

(25°C Ambient Temperature Unless Otherwise Noted)

