



**Part No.: JSL-521URUYC-CC**

**Features:**

- Long life solid state reliability.
- Low power consumption
- I.C.compatible.
- Compliance with EU REACH.
- RoHs Compliant

**Descriptions:**

- Emitting Color: Red+Yellow Bi-Color.
- Device Outline:  $\phi$  5mm Round Type.
- Lens Type: Water Clear.
- Three Leads With One Common Cathode Type.
- The designed for a variety of applications where require dual illumination.

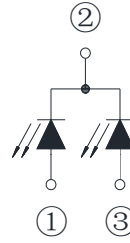
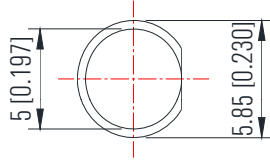
**Application:**

- Circuit board.
- Indicators.
- Computer.
- Home appliance.
- Industrial.



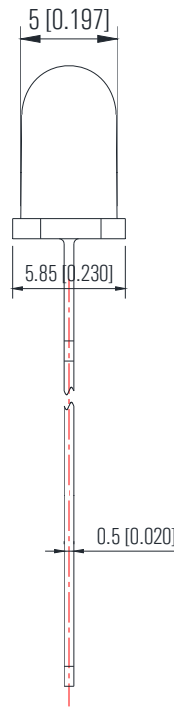
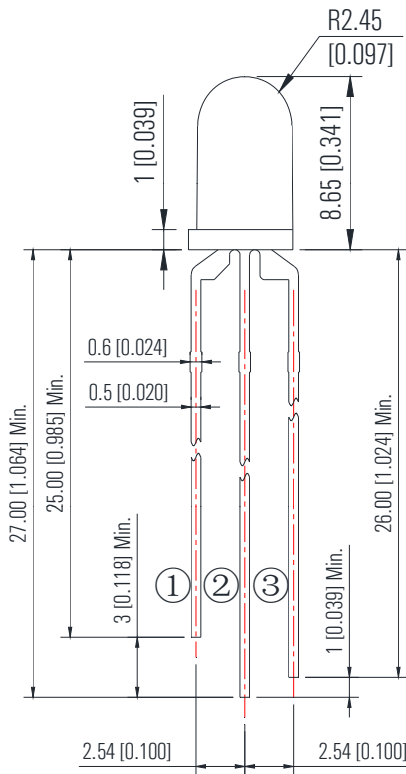
Part No.: JSL-521URUYC-CC

Package Dimension:



1 Anode the Second Color  
2 Common Cathode  
3 Anode the First Color

Polarity



Notes:

1. All dimensions are millimeters/单位: mm.
2. Tolerance is +/-0.25mm unless otherwise noted/  
没有标注的公差均为±0.25mm



Part No.: **JSL-521URUYC-CC**

**Absolute maximum ratings (Ta = 25°C)**

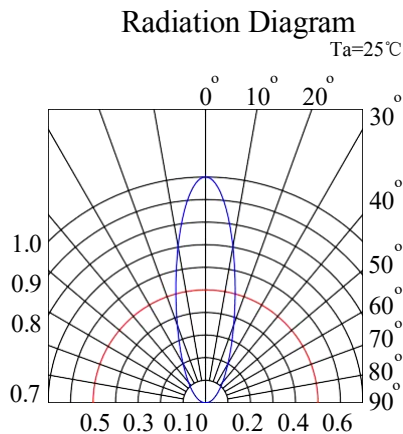
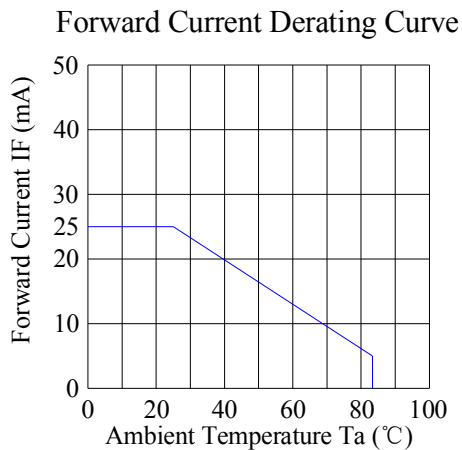
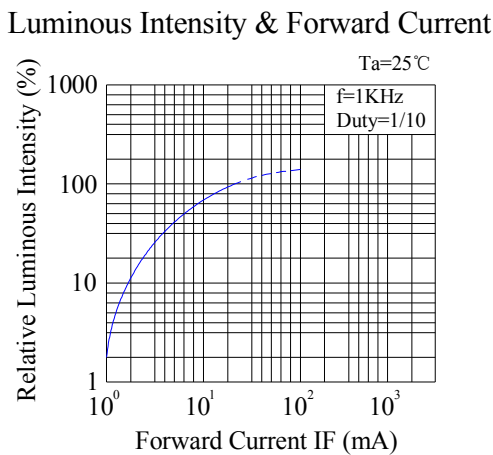
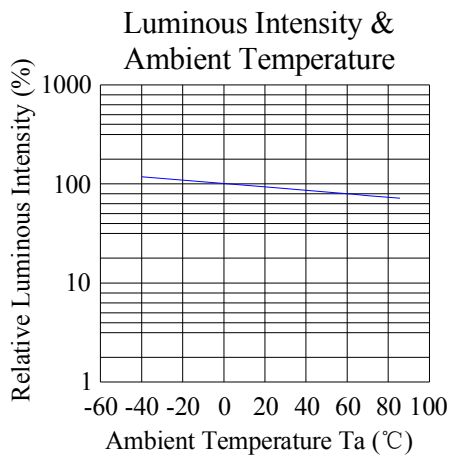
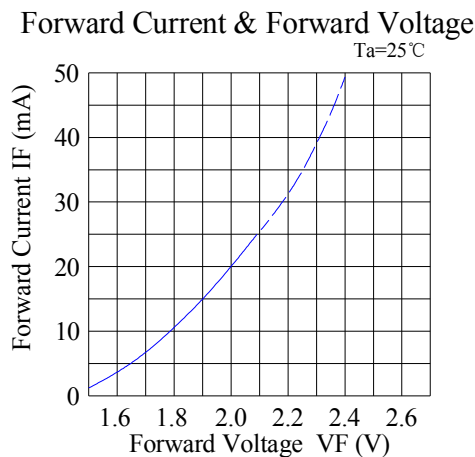
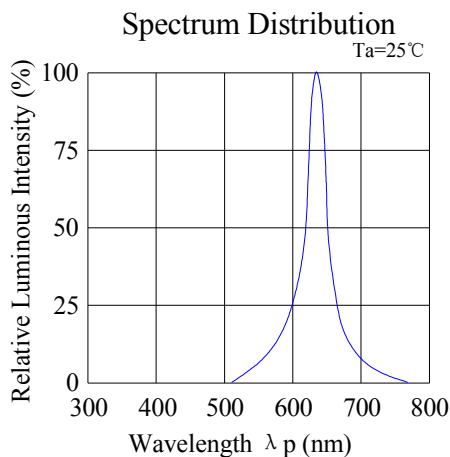
Parameter	Symbol	Test Condition	Values		Unit
			Min.	Max.	
Reverse Voltage	V <sub>R</sub>	I <sub>R</sub> = 30 μ A	----	5	V
Forward Current	I <sub>F</sub>	----	----	25	mA
Power Dissipation	P <sub>d</sub>	----	Red	60	mW
			Yellow	60	
Pulse Current	I <sub>peak</sub>	Duty=0.1mS, 1kHz	----	100	mA
Operating Temperature	T <sub>opr</sub>	----	-40	+85	°C
Storage Temperature	T <sub>str</sub>	----	-40	+85	°C

**Electrical and optical characteristics (Ta = 25°C)**

Parameter	Symbol	Test Condition	Color	Value			Unit
				Min.	Typ.	Max.	
Forward Voltage	V <sub>F</sub>	I <sub>F</sub> = 20mA	UR	1.8	2.0	2.4	V
			UY	1.8	2.0	2.4	
Reverse Current	I <sub>R</sub>	V <sub>R</sub> = 5V	UR	---	---	5	μ A
			UY	---	---	5	
Dominate Wavelength	λ <sub>d</sub>	I <sub>F</sub> = 20mA	UR	---	624	---	nm
			UY	---	590	---	
Peak Wavelength	λ <sub>p</sub>	I <sub>F</sub> = 20mA	UR	---	632	---	nm
			UY	---	592	---	
Spectral Line half-width	Δ λ	I <sub>F</sub> =20mA	UR	----	20	----	nm
			UY	----	20	----	
Luminous Intensity	I <sub>v</sub>	I <sub>F</sub> = 20mA	UR	600	1200	----	mcd
			UY	500	1200	----	
Viewing Angle	2 θ 1/2	I <sub>F</sub> = 20mA	UR	---	30	---	deg
			UY	---	30	---	

### Typical electrical/optical characteristic curves:

(25°C Ambient Temperature Unless Otherwise Noted)





Part No.: JSL-521URUYC-CC

Typical electrical/optical characteristic curves:

(25°C Ambient Temperature Unless Otherwise Noted)

